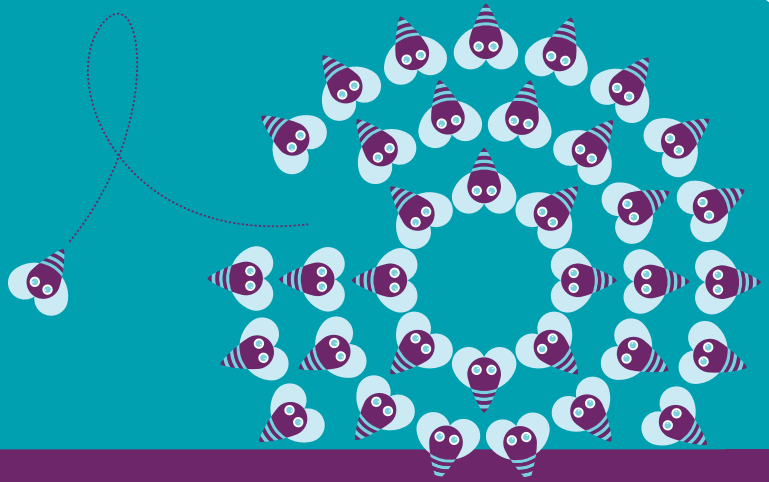


# OPENHIVEtalk™

## Filtered instant messaging

Part of  
OPENHIVEmle



**Ben's been ill and off school for over a week, but he's feeling well enough to catch up on some lessons from his bedroom. All his teacher needs to do is send an instant message and Ben can take part in a video conference call with the rest of his class. And he can still contribute to a joint project with his friends.**

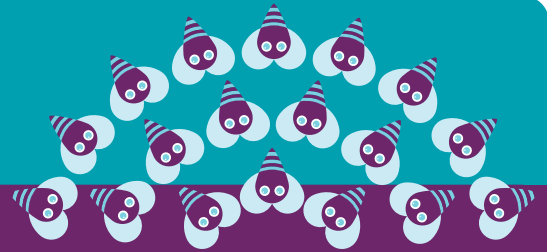
### **OPENHIVEtalk adds a new dimension to communication**

OPENHIVEtalk provides you with multiple ways to connect and collaborate with others in your community – through voice, video and instant messaging (IM). Used by teachers, support staff and learners, OPENHIVEtalk adds flexibility and poignancy to your communication.

A unified communications solution, OPENHIVEtalk provides an inclusive, collaborative environment that supports all teaching and learning activities in real time. OPENHIVEtalk offers filtered, closed group instant messaging, live presence information, web conferencing facilities, desktop sharing and whiteboarding – deal for multi-campus learning and remote team working.

OPENHIVEtalk provides easy and centralised access to all message types – voice, fax, email and SMS – from virtually any communications device, including telephone, personal computer, smartphone or a web browser through the Internet. And OPENHIVEtalk integrates seamlessly with OPENHIVEmail, delivering all messages into one familiar inbox.

So wherever your users are, OPENHIVEtalk provides a safe and secure environment in which your educational communities can interact, engage and build social bonds that enrich the teaching and learning experience.



## Benefits

- Adds real flexibility and efficiency to your communication methods – ideal for multicampus learning and peripatetic teachers. Video conferencing makes it easier to synchronise diaries for events such as senior leadership team meetings.
- Users can share their work, documents, applications or desktop via a web conference, making team projects, LA, cluster or federation-wide initiatives or remote international collaboration easy.
- Communication from within applications simplifies this diverse choice of messaging and collaboration tools. Users can easily respond to an email message with a phone call or contact the author of a document instantly.
- Filtered service to ensure that the risks of cyber bullying and profanity are completely removed and education benefits are facilitated within a safe and secure environment.
- An intuitive user interface allows you to transform a standard phone call into a video call or an IM session into a voice call with just one click. With a simple drag and drop feature, users can instantly create a conference call by inviting others to take part.
- Immediate, visual presence awareness enables users to see whether a contact is available, busy, on a call, in a meeting or lesson, or out of the office – and to find out when they will be available.
- You maintain complete control of the features you wish to provide.



## So what is OPENHIVEmle?

OPENHIVEmle is one of the strands of our modular OPENHIVEeducation portfolio. OPENHIVEeducation comprises OPENHIVEmle, OPENHIVEisp and OPENHIVEict – a complete solution for all your school's ICT needs.

OPENHIVEmle is a fully managed learning environment that uniquely places personalised learning and improved educational outcomes at the heart of your school's ICT provision.

Totally integrated, OPENHIVEmle brings all your ICT services together, from MIS to email, portal, VLE and online reporting. Technical

issues, such as identity management and Single Sign-On, are taken care of, enabling users to enjoy the full benefits of an intuitive, engaging and fun learning experience.

OPENHIVEmle is ideal for primary and secondary schools, academies, Free Schools, clusters, federations and local authorities.

OPENHIVEmle provides the ultimate in choice and flexibility. Choose just the modules you need or use them all collectively for a truly integrated learning platform that will meet and exceed the aspirations of your teachers, support staff, learners and parents.

**OPENHIVEmle**<sup>™</sup>

[www.openhive.net](http://www.openhive.net)

**e-Innovation Centre**, University of Wolverhampton, Priorslee, Telford TF2 9FT United Kingdom  
T +44 (0)1782 338254 F +44 (0)1782 338294 E [openhive@synetrix.co.uk](mailto:openhive@synetrix.co.uk) [www.openhive.net](http://www.openhive.net)



**To arrange a demonstration please call 01782 338254,  
email [openhive@synetrix.co.uk](mailto:openhive@synetrix.co.uk) or visit [www.openhive.net](http://www.openhive.net)**